

Eiffel Tower Ornament

<jensoriginalsewembroiderydesigns.yolasite.com>

This Eiffel Tower ornament stitches up in under 3 minutes. It sews diagonally in the 4x4" hoop, stitching as a single stitch object with no color changes. When finished and trimmed, the tower ornament stands approximately 2.3 x 4.5".



You will need

- Two pieces of felt approximately 3" x 5" in your chosen color -
- light grey, pearl grey, or pale grey-blue felt work well.
- Plastic wrap or Glad Press n Seal
- Tear-away stabilizer

Tiny Eiffel Tower Toy Instructions

<jensoriginalsewembroiderydesigns.yolasite.com>

1. Hoop a single layer of Glad Press N Seal in the 4x4" hoop with the sticky side up (toward the hoop). Make sure it's snug.

You can substitute regular cling wrap if you wish; use spray adhesive to hold the felt in position.

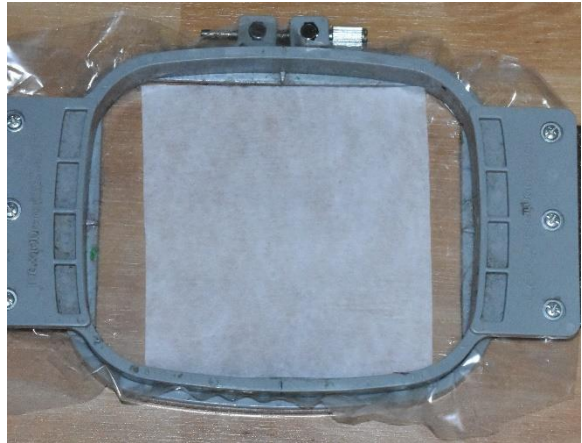


Note: The plastic wrap works well for this project, but not all machines will tolerate it (mine does, but my sister's doesn't). If you find it won't work with your machine, you can go ahead and hoop the tear-away directly in the hoop.



Although you want the Tower to be fairly stiff when finished, I prefer a tear-away to a cut-away stabilizer. In the photos I am using a clear plastic bag as base, and overlaying it with pieces of tear-away stabilizer. This process works well, at least for my machine, and is cheaper than hooping the stabilizer in the full hoop.

2. Place a piece of tear-away stabilizer approximately 4.5" x 4.5" against the sticky Press N Seal in the center of the hoop, pressing to hold it in place. Lightly spray a second piece of stabilizer and place it on top of the first piece of tear-away.



3. Turn the hoop face down. Spray and place a third piece of tear-away stabilizer on the back of the hoop, centering it over the tear-away that's already on the front.

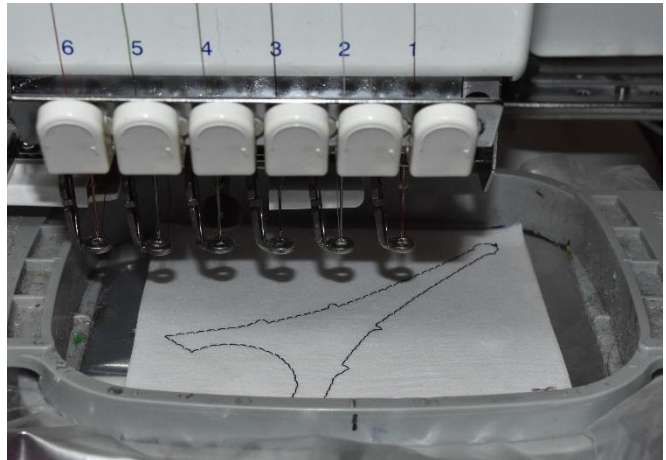


4. Change the bobbin to black thread for the entire stitch-out.



5. Place the hoop in the machine and sew the first color – an outline of the tower.

Remove the hoop from the machine, but do not unhoop.



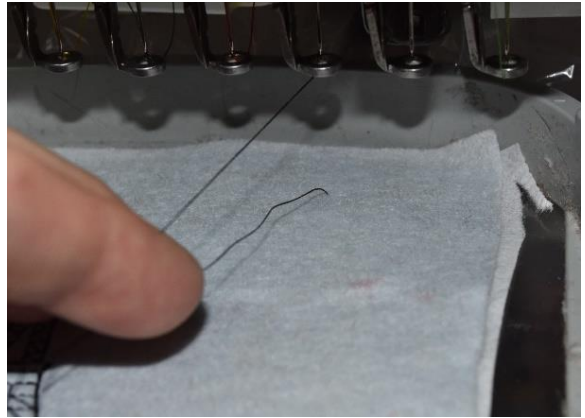
6. Lightly spray one of the felt pieces and place it diagonally in the hoop, centering it over the stitched outline so that it covers the stitching completely. Double check to make sure that the edges are well covered.



7. Turn the hoop face down. Spray and place the second felt piece, again on the diagonal, so that the outline of the tower is completely covered. If you like, you can secure the corners with masking tape to ensure that the felt doesn't shift when you return the hoop to the machine.



8. Place the hoop into the machine. Take one stitch and pull the bobbin thread to the top side. Lightly hold the thread ends out of the way, and begin stitching.



9. Take several stitches, then pause the machine and trim the thread tails. This method will keep the stitches neat on the back side of your work and will eliminate those pesky birds nests on the underside.



10. Stitch the design all the way to the end. The tower will sew on the diagonal.



11. Remove the hoop from the machine. Unhoop the finished design.



12. To make it easier to remove the tear-away stabilizer, carefully trim around the archway, leaving a border of approximately 1/8". I find it helpful to do this on both sides of the stitch-out, but you may be able to get away with trimming only the one side.



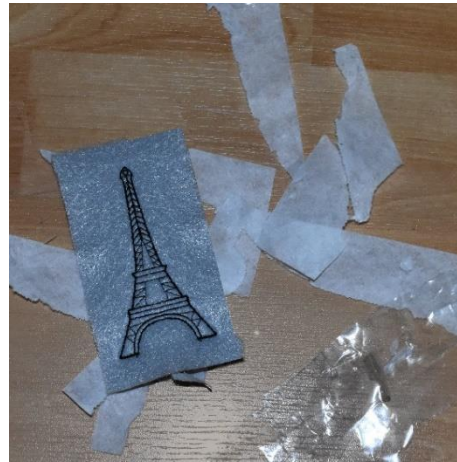
13. Gently pull away the plastic and the tear-away stabilizer. It's best to do this one layer at a time so as not to damage the stitch-out.



14. You can use a hemostat to help remove stubborn bits of stabilizer or plastic. Work gently!



15. Once you have removed all the layers of stabilizer and plastic, it's time to trim the design.



16. Using your sharpest scissors, carefully trim around the edge of the stitching, leaving a border of about 1/8" or so. Work carefully and aim for a smooth cut, as this will be the finished edge of your ornament.



17. The trimmed and completed Eiffel Tower Ornament is slightly stiffened by the three layers of stabilizer. Handled carefully, it should keep its shape indefinitely. If it becomes crushed in storage, press it gently with a warm iron.

